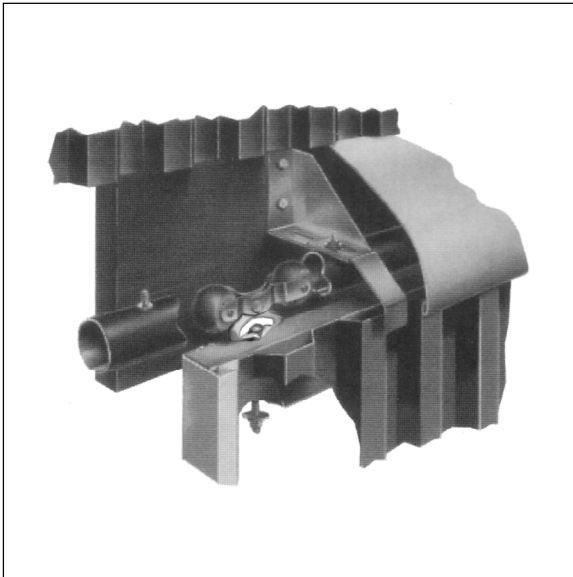


SPECIFICATIONS

CB-4

BOLT-HUNG, BRACKETLESS TRACK FOR USE ON METAL BUILDINGS



Bolt Hung Track is designed for mounting directly on the structural members of metal buildings. Mounting holes are located on 2-foot centers. Matching mounting holes in the structural members of the building must be at least 25/64" diameter and may be up to 5/8" to provide tolerance for assembly. Holes should be located to allow clearance for nuts and washers. Special, keyed mounting bolts required for easy assembly. Lug-Loc Splice Collars are needed to loc track sections together at joints and to assure accurate track alignment.

643840 Fastener Package — Contains 60 each of 1- inch long bolts, 1-1/8" O.D. flat washers, 1-5/8" O.D. flat washers, speed nuts and hex nuts for mounting 120-feet of track to structural members up to 1/4" thick. Packed in box. Weight 8 lbs.

807014 Fastener Set — (Bulk Packed) — Consists of 1000 each 1-inch bolt, 1-1/8" O.D. flat washer, 1-5/8" O.D. flat washer, speed nuts and hex nut. Weight .1 lb. each.

Material: 14 ga. high carbon steel

Lengths available: 6'-20' in 2' increments

Weight per lineal foot: 2 lbs

Finish: galvanized

Maximum door leaf weight with single truck hangers: 400 lbs.

Maximum door leaf weight with double truck hangers: 600 lbs.

Spacing of mounting holes: 24" O.C.

Fastener Package required: 643840 pkg. 60
807014 pkg. 1000

Splice Collar required: 643424

Bird-proof End Caps: 646503

