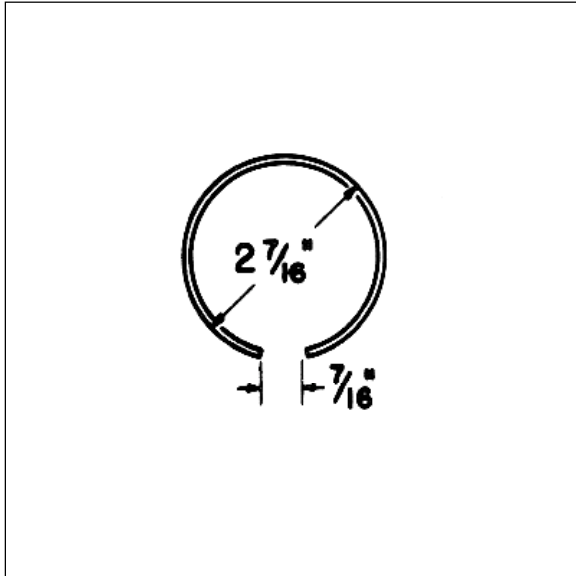


# SPECIFICATIONS

CB-2

## TUBULAR DOOR TRACK



**Heavy-gauge Tubular Track** — Packed 2 pieces of one length in nested bundle. Galvanized.

**Part # 900910**  
**Packed Bulk**

### 646505 GALVANIZED UNIVERSAL BRACKETS FOR MOUNTING TUBULAR TRACK

Universal Brackets are used as splice brackets, end brackets and intermediate brackets. Lug-Loc devices keep track sections locked in line and prevent track from shifting lengthwise. When brackets are used as intermediate supports, lugs should be knocked out with a nail. A bracket must always be located at each end of the track run to prevent track from moving lengthwise.

**Material:** 13 ga. high carbon steel

**Lengths available:** 6'-20' in 2' increments

**Weight per lineal foot:** 2.2 lbs

**Finish:** galvanized

**Bracket spacings:** 12", 18", 24"

**Maximum door leaf weight with single truck trolley hangers:** 600 lbs.

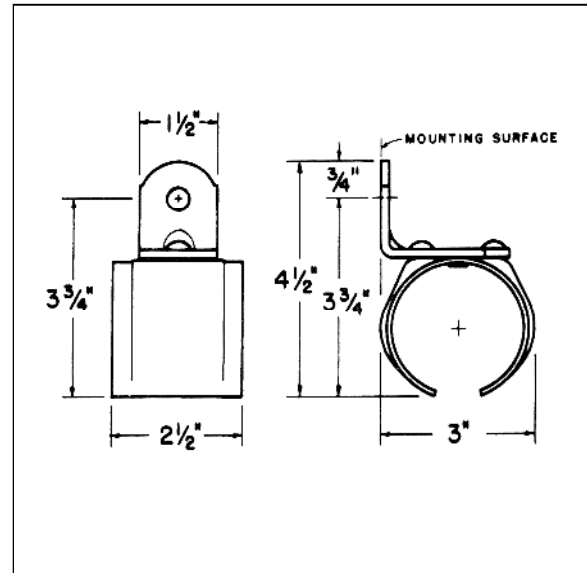
**Maximum door leaf weight with double truck trolley hangers:** 1200 lbs.\*

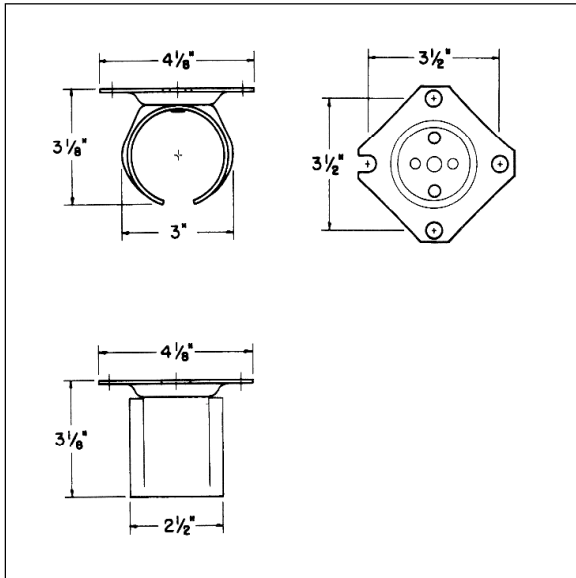
**End Caps required per Track run:** 2

**Supported lags (Packed with brackets):** 2

**Weight per lineal ft.:** 2.2 lbs.

\*Brackets mounted on 12" centers.





**646602 Galvanized Ceiling Bracket** — For mounting a single run of track from above. Galvanized. Weight 1 lb. each. Order two 3/8" x 2-1/2" lag bolts separately.

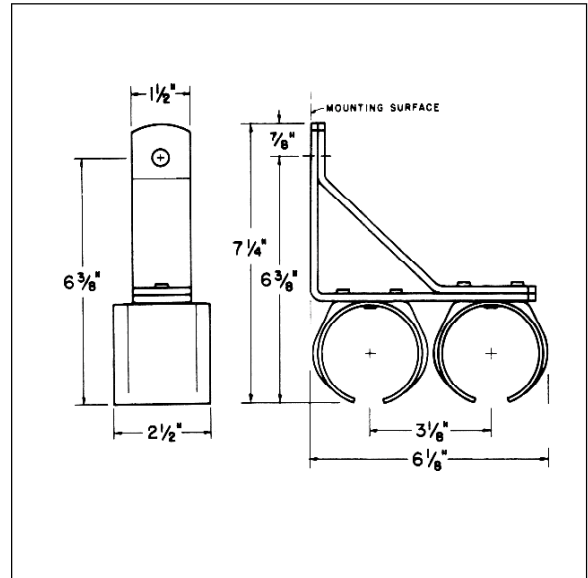
**649017 UNIVERSAL BRACKET FOR MOUNTING TUBULAR TRACK ON METAL CONSTRUCTION**

All Metal Construction Brackets are for mounting track from above. Each has a 1/2 - 13 stud bolt welded to its' top. Packed 24 in carton unless otherwise specified. Weight .8 lbs. each.

**Metal Construction Bracket** — Has 1-5/16" long stud. Zinc-plated.

**179200 Hex Nuts** — For all Brackets. Zinc-plated.

**End Caps** — IMPORTANT! Purpose of End Caps is for bird-proofing the tracks - *not as door stops*. Two required for each run of tubular and Seal-Tite Track. Furnished with 643426 or 643427 Trolley Hangers. Galvanized.



**646801 Galvanized Universal Double Bracket** — For mounting two parallel runs of tubular track for by-passing door applications. Zinc-plated. Packed 12 per carton with twelve 3/8" x 2-1/2" lags. Weight 3 lbs. each.

